

Fresh USA, Inc.

INSTALLATION INSTRUCTION



JEWELRY SYSTEM

«Smart Shelf»



By following this instruction you will receive an excellent Jewelry Theft Prevention & Inventory System with the ability to quickly inventory RFID UHF.

PACKAGE CONTENTS:

- Reader - antenna RFID UHF or Reader + antennas
- Power supply 110/220 volt
- Cable set
- Mounting bracket and fasteners
- Strobe alarm

1. Connect cable **A** to connector **A**



2. Connect cable **B** to connector **B**



3. Connect the antenna cable **C** to the antenna connector **C**.



If you have multiple antennas, connect all antennas.



Antenna reader never has false positives.

The antenna detects only tags associated with it or with tags available in the database.

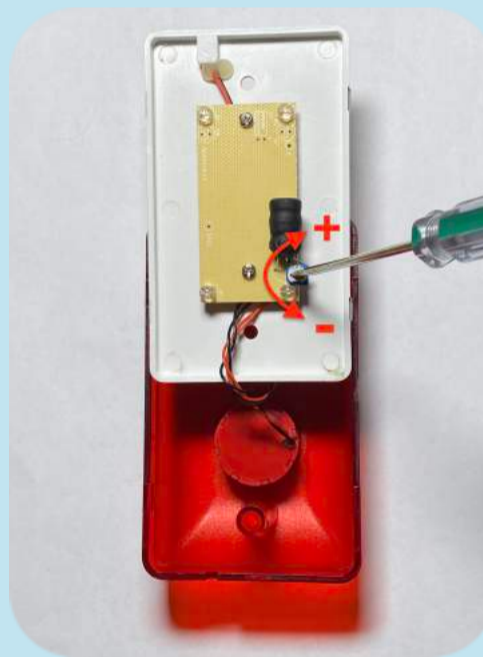
Alarm volume can be adjusted.

You can lock an electric door lock or turnstile.

4. Connect the antenna cable **C** to the antenna.



5. Connect the alarm strobe to the reader cable **B**. Open the strobe alarm cover. Turn the volume control to the level you want (- or +). Use 9-12V connectors as shown in the picture. The green wire and the black-white wire always have a closed contact. Connect the white wire to the black one (from the alarm). Connect the brown wire to the red wire (from alarm) .



Or use the diagram below.

Cable of OUTPUTB

| Item | Symbol | Comment |
|--------------|---------|---|
| Black | TGIN | Trigger input (TTL level) |
| Brown | VOUT+ | +9~+24V output (directly connected to power supply) |
| Red | WD0 | Wiegand DATA0 |
| Orange | CM_RLY2 | Relay2 common node |
| Yellow | NC_RLY1 | Relay1 normal-close node |
| Green | NO_RLY1 | Relay1 normal-open node |
| Blue | R+ | RS485 R+ |
| Purple | OUTPUT0 | external indicator control |
| Red Black | GND | GND |
| Yellow Black | WD1 | Wiegand DATA1 |
| Pink | NC_RLY2 | Relay2 normal-close node |
| Grey | NO_RLY2 | Relay2 normal-open node |
| White | CM_RLY1 | Relay1 common node |
| Light Green | R- | RS485 R- |

Either of two types of power connectors can be supplied.

Wire plug of various types, American, European, English, Asian.

- You can change the operating frequency.
- You can change the power of the antenna reader.
- You can change the IP address and port of each antenna reader.
- You can combine a large number of antenna readers into a common network.

6. Connect the power supply. Plug the power supply into a 110/220 volt outlet. Connect the power supply connector to the reader connector.



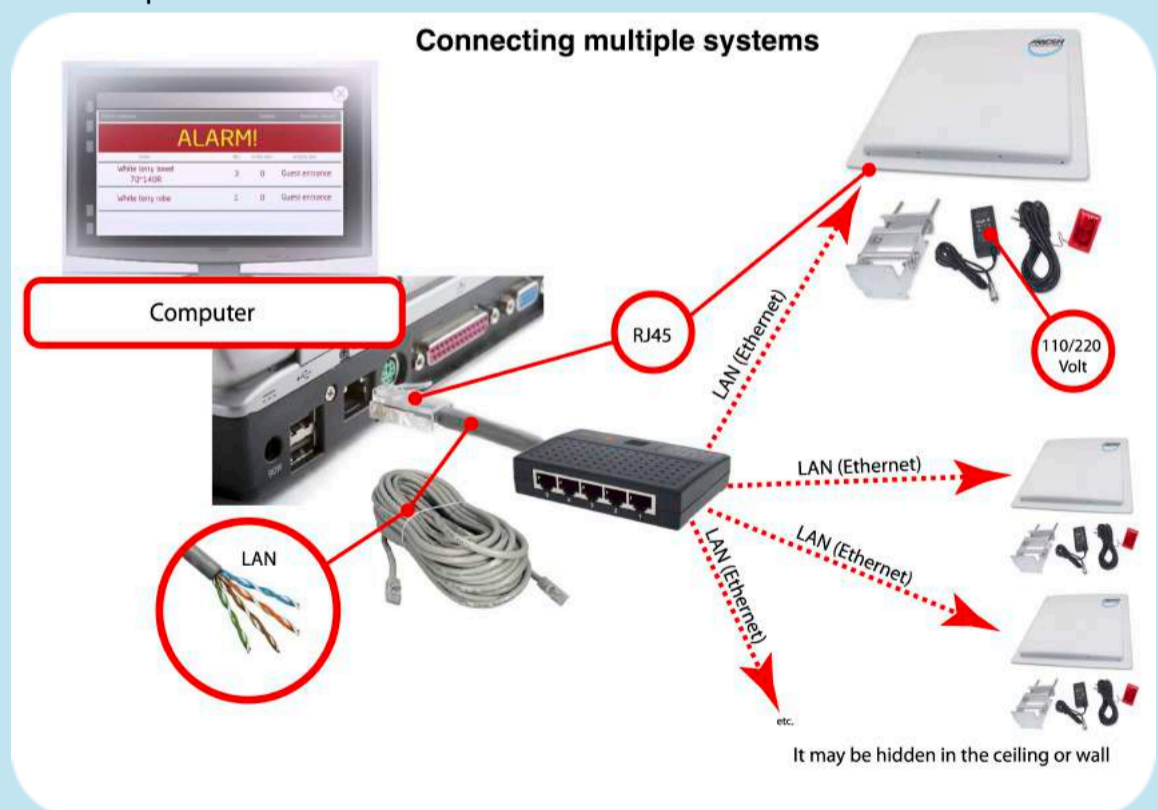
1



2



7. Connect the Ethernet cable TCP/IP connection from your computer to the reader **always through a router**, using the RJ45 connectors. In some cases, you can order a wireless connection option: Wi-Fi or 4G / LTE. You can have multiple connections and give each connection its own specific name.



8. You can change the IP address and reader ports as well as operating frequencies in accordance with your local legislation using the "Configurator" application for Windows OS.

How to properly place and install antennas

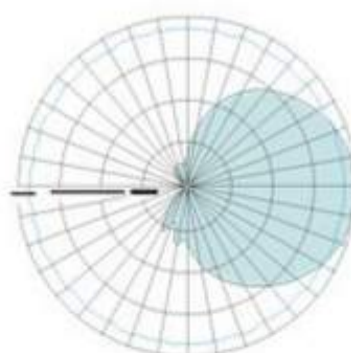
- 1) You can mount the bracket above or below a desk / counter, to the side or to the ceiling, with the reader beams pointing towards the tags. It is very important that the field and position of the readers' antennas are correctly adjusted. The field should be directed towards the protected tagged items.

You can also fix the antenna bracket by hiding it behind the ceiling (if the ceiling does not have a **metal** surface).

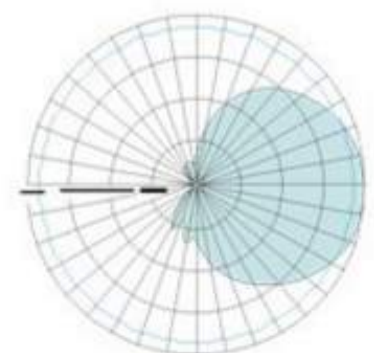
- 2) Install the antenna reader by fastening it to the bracket. **Pay attention to the arrow** on the back of the antenna. The arrow on the antenna should point up. In this case, this arrow should always be located slightly higher than the rest of the antenna. The antenna reader should be slightly tilted.



Beam pattern.



H-Plane



E-Plane

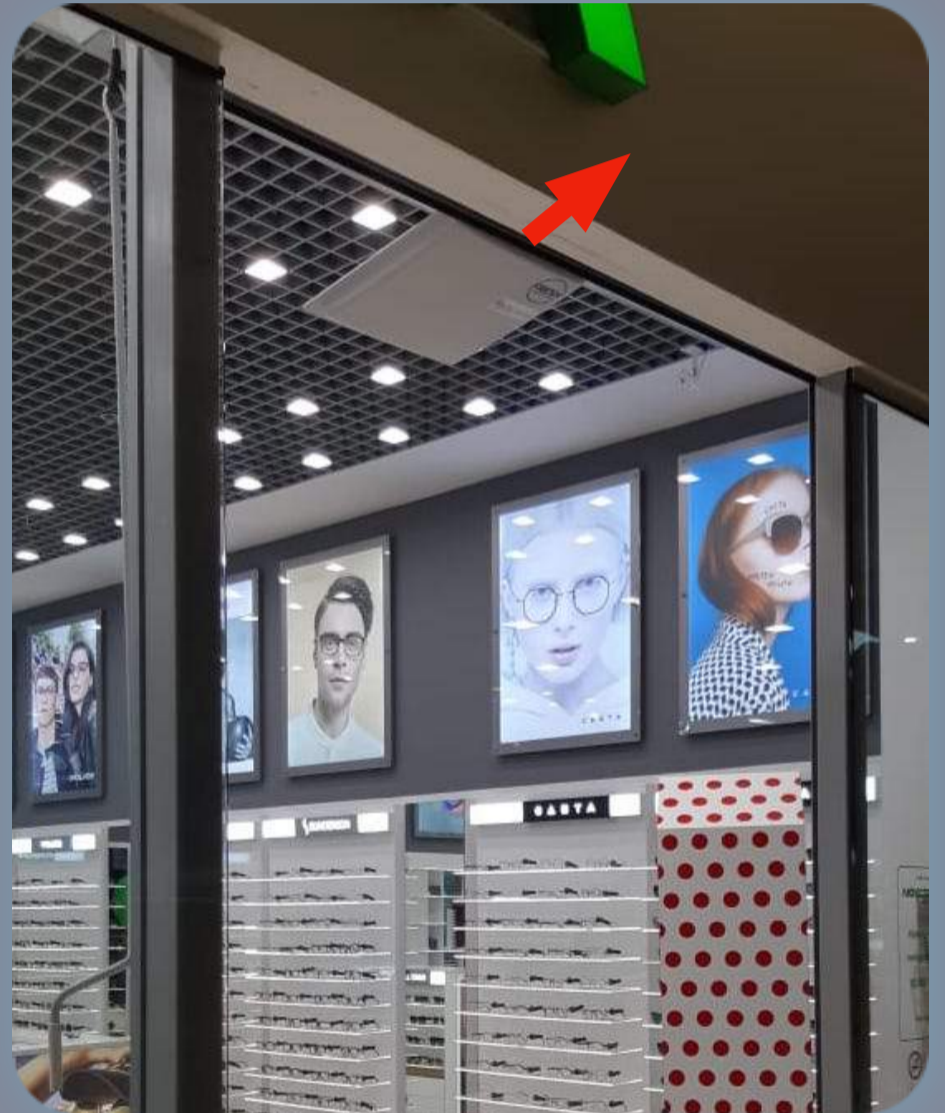
Fresh USA, Inc.

IMPORTANT!

Pay attention to the arrow located at the top of the reader antenna.

Install the antenna reader in accordance with the instructions.

Arrange tags appropriately.



Placing tags on top of each other is not allowed, because it creates interference when reading.



Correct tag placement

